



Illustration: PE Teknik & Arkitektur AB



Hönsarvsgårdens Förskola


Illustration från Hemgatan

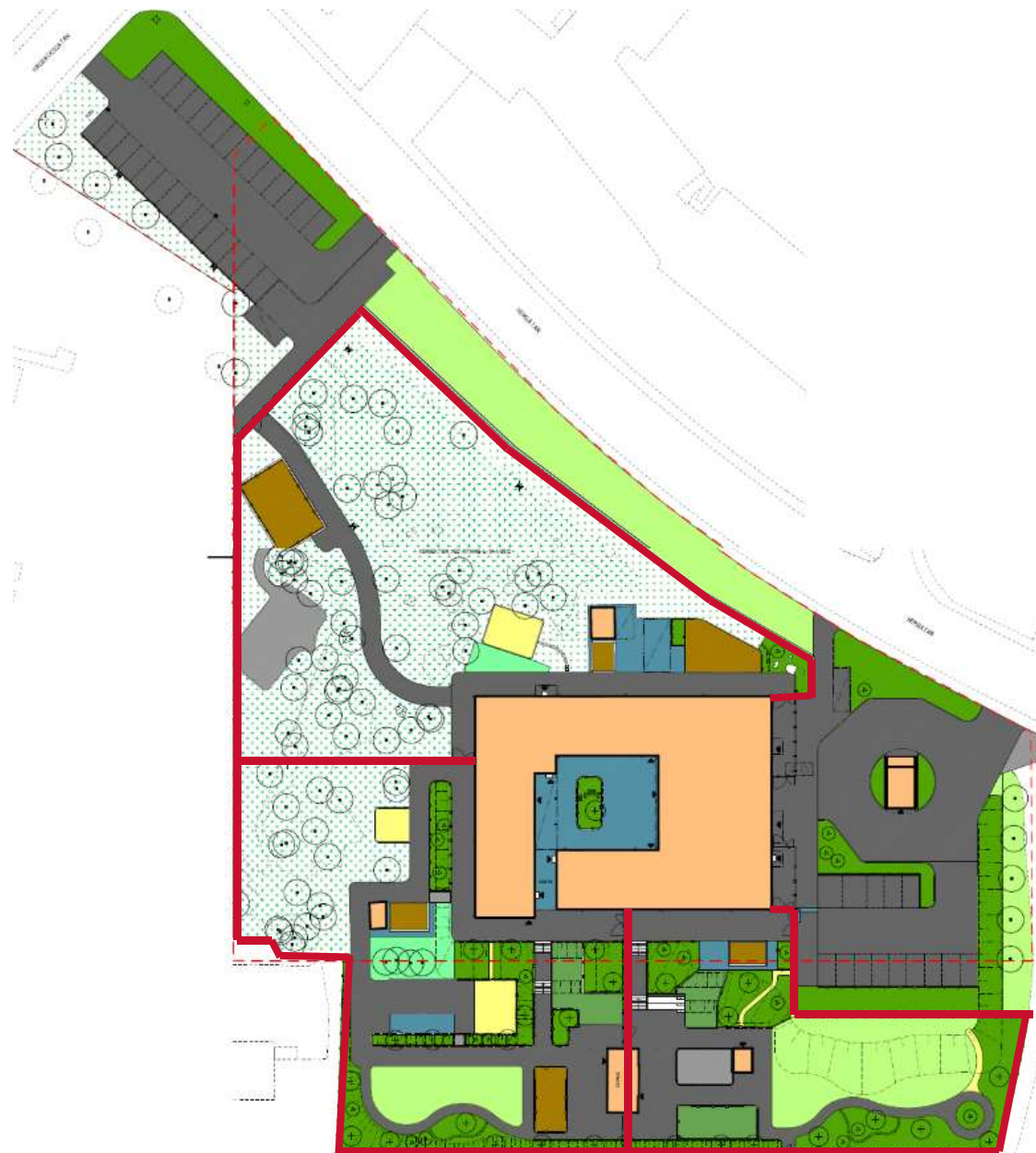
(överensstämmer inte helt med verkligheten)




Illustration: PE Teknik & Arkitektur AB



Illustration (överensstämmer inte helt med verkligheten)

-  GRÄS KLASS 1
1367kvm
-  GRÄS KLASS 2
136kvm
-  NATURMARK-SKOG
3342kvm
-  PLANTERING
1655kvm
-  ASFALT
3750kvm
-  PLATTOR
416kvm
-  GRUS
221kvm
-  SAND
260kvm
-  BARK
154kvm
-  KONSTGRÄS
184kvm

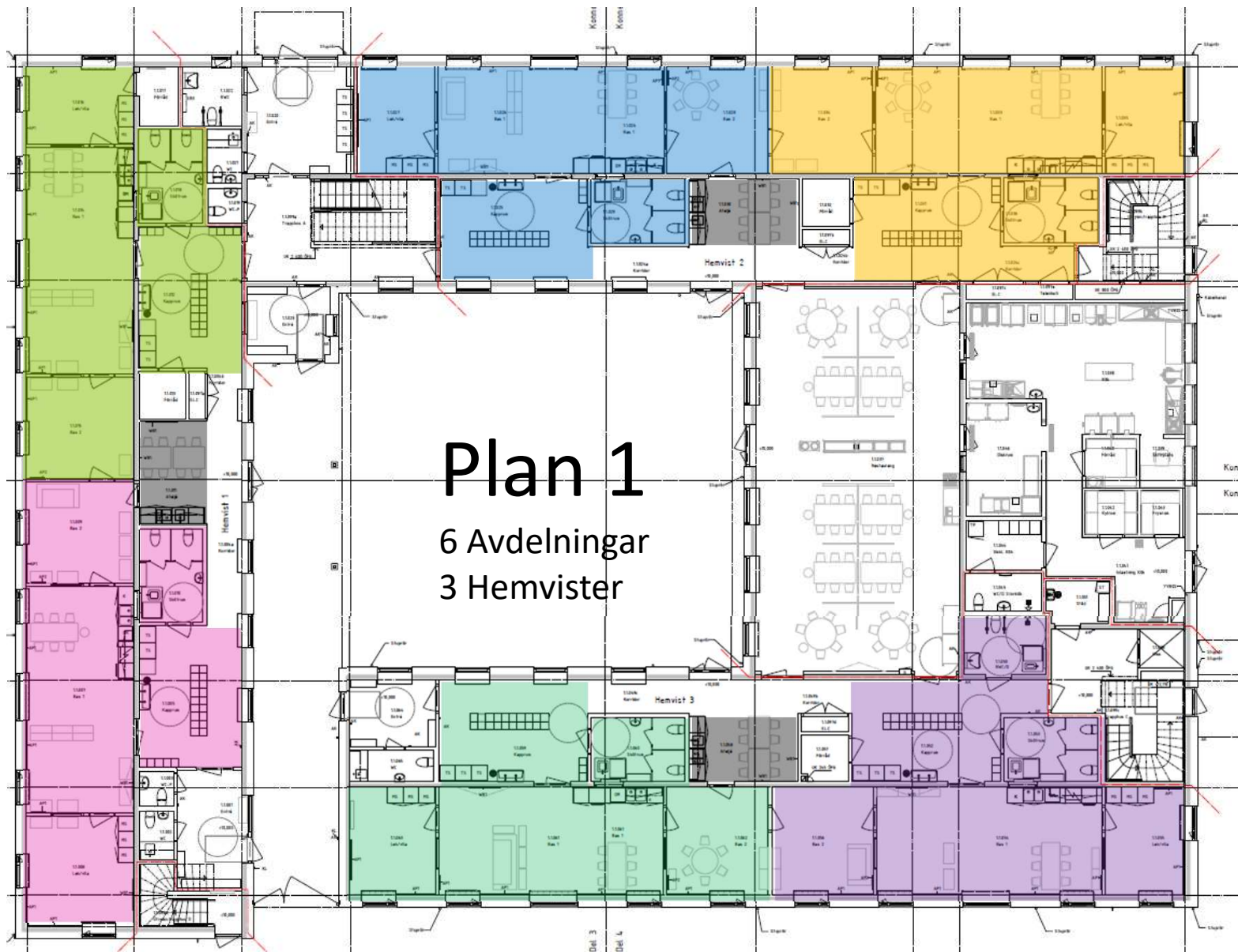


-  GRÄS KLASS 1
1367kvm
-  GRÄS KLASS 2
136kvm
-  NATURMARK-SKOG
3342kvm
-  PLANTERING
1655kvm
-  ASFALT
3750kvm
-  PLATTOR
416kvm
-  GRUS
221kvm
-  SAND
260kvm
-  BARK
154kvm
-  KONSTGRÄS
184kvm



-  GRÄS KLASS 1
1367kvm
-  GRÄS KLASS 2
136kvm
-  NATURMARK-SKOG
3342kvm
-  PLANTERING
1655kvm
-  ASFALT
3750kvm
-  PLATTOR
416kvm
-  GRUS
221kvm
-  SAND
260kvm
-  BARK
154kvm
-  KONSTGRÄS
184kvm







Avdelning



Bas 1



Bas 1

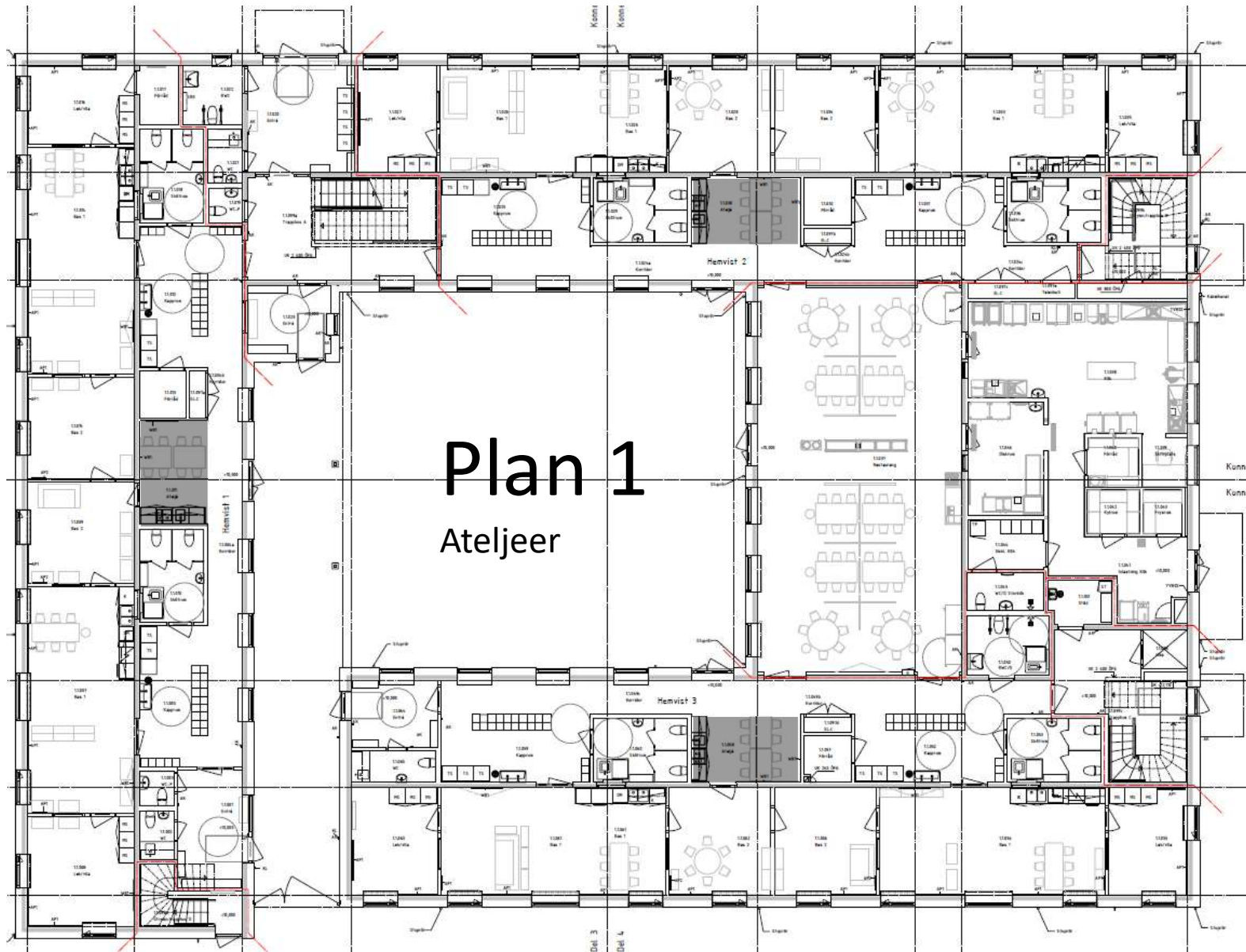


Bas 2









Plan 1

Ateljeer

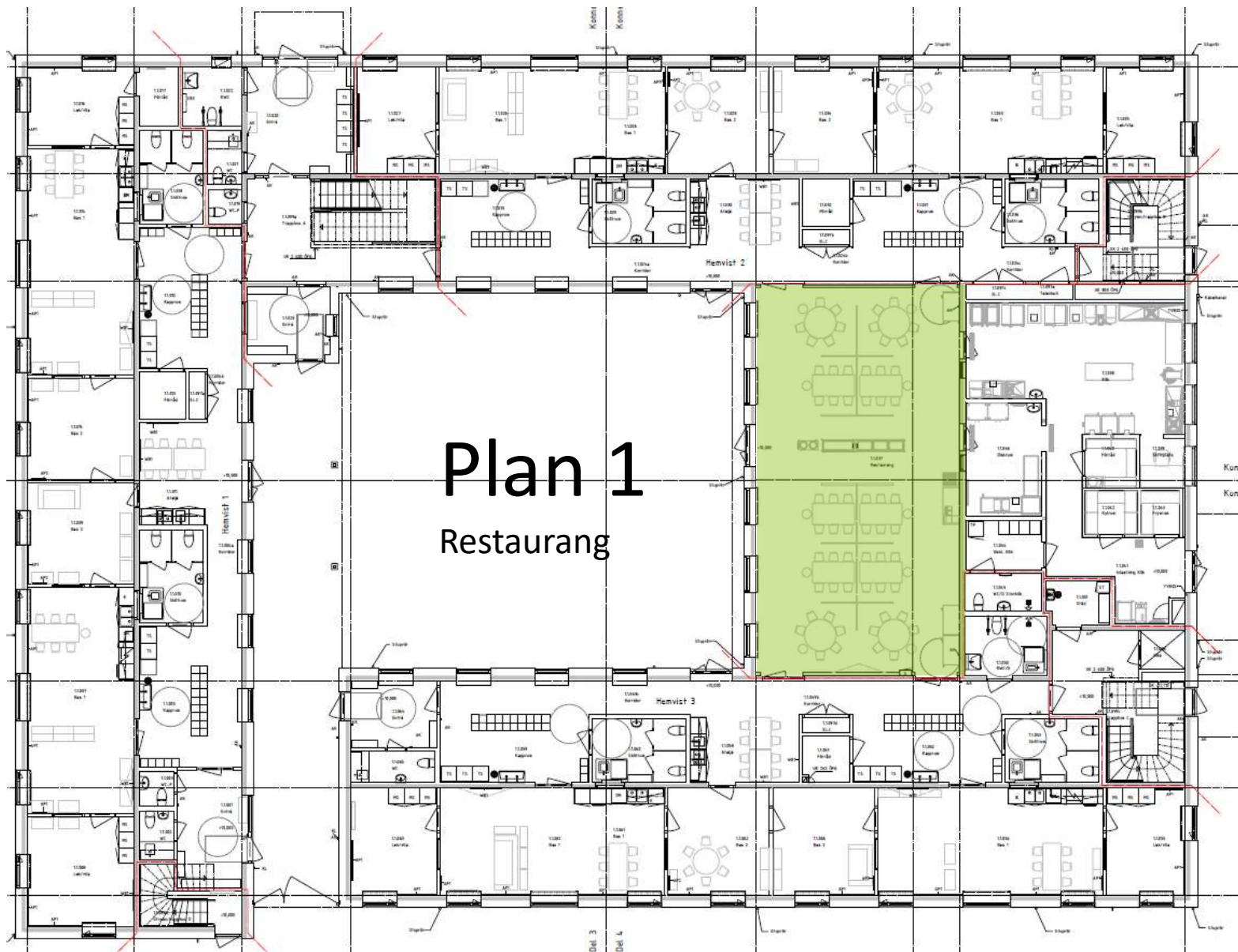
Ateljeer



Atelje



Atelje



Plan 1

Restaurang







Restaurang









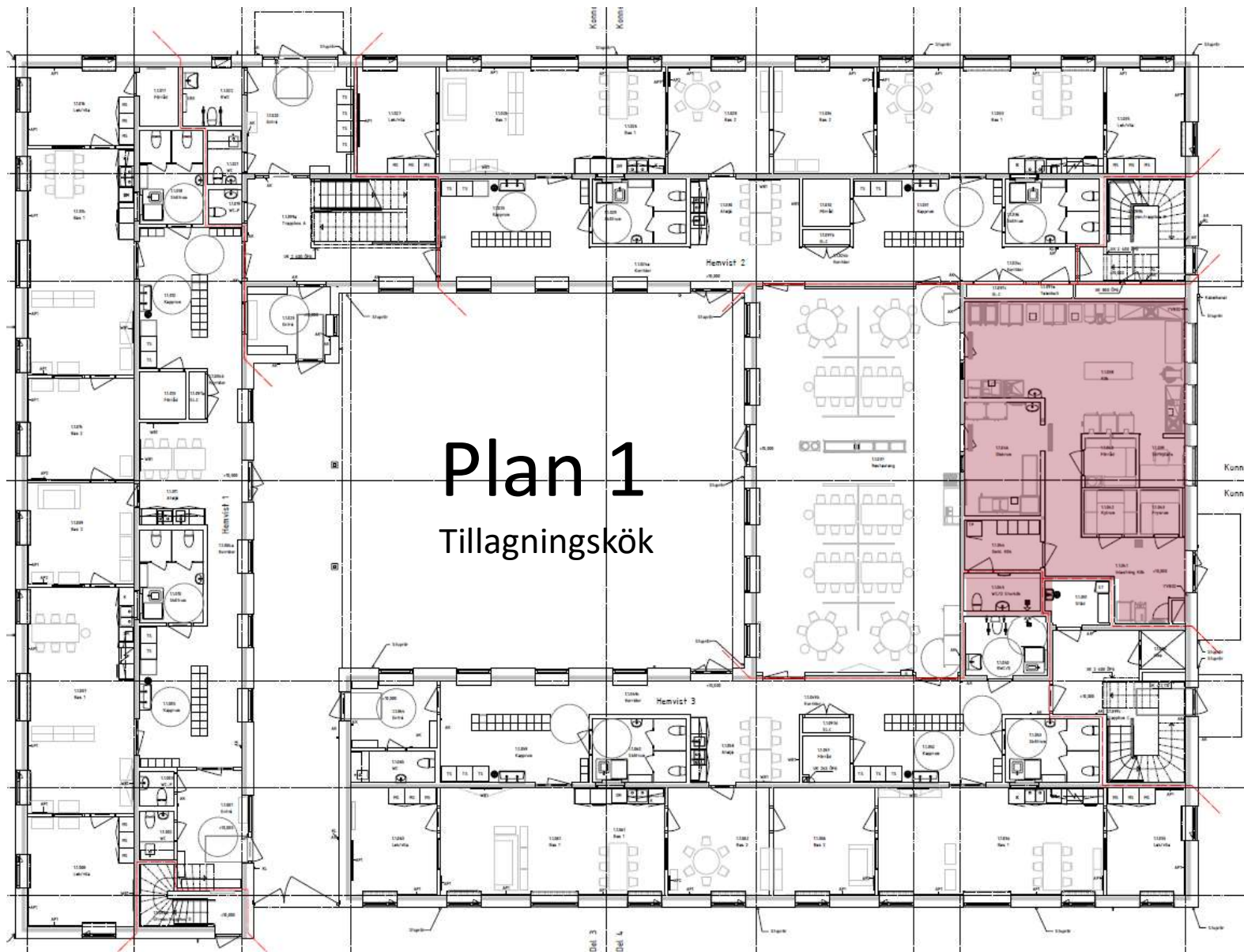
Innergård





Innergård



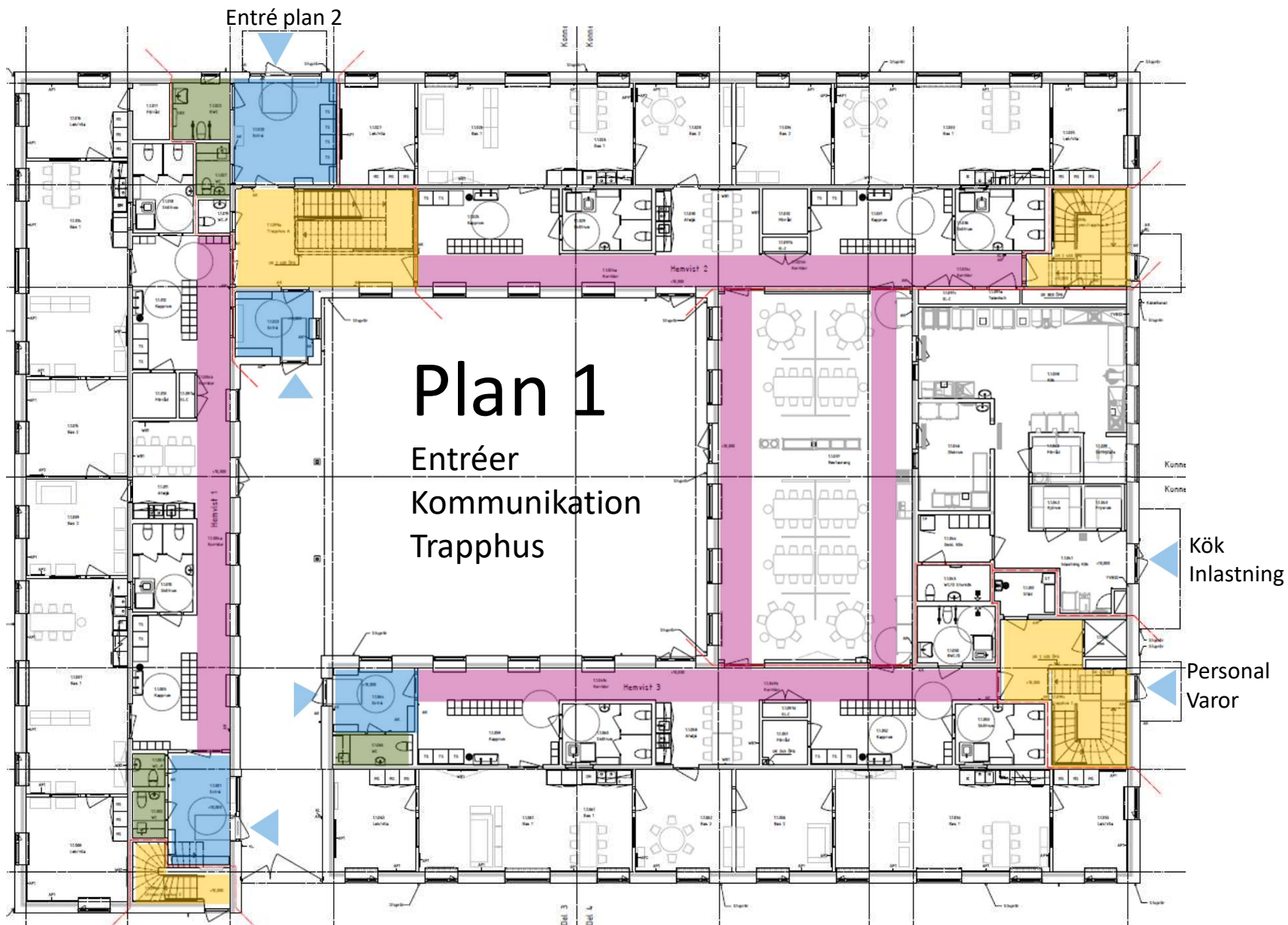


Plan 1

Tillagningskök

Tillagningskök







Entré



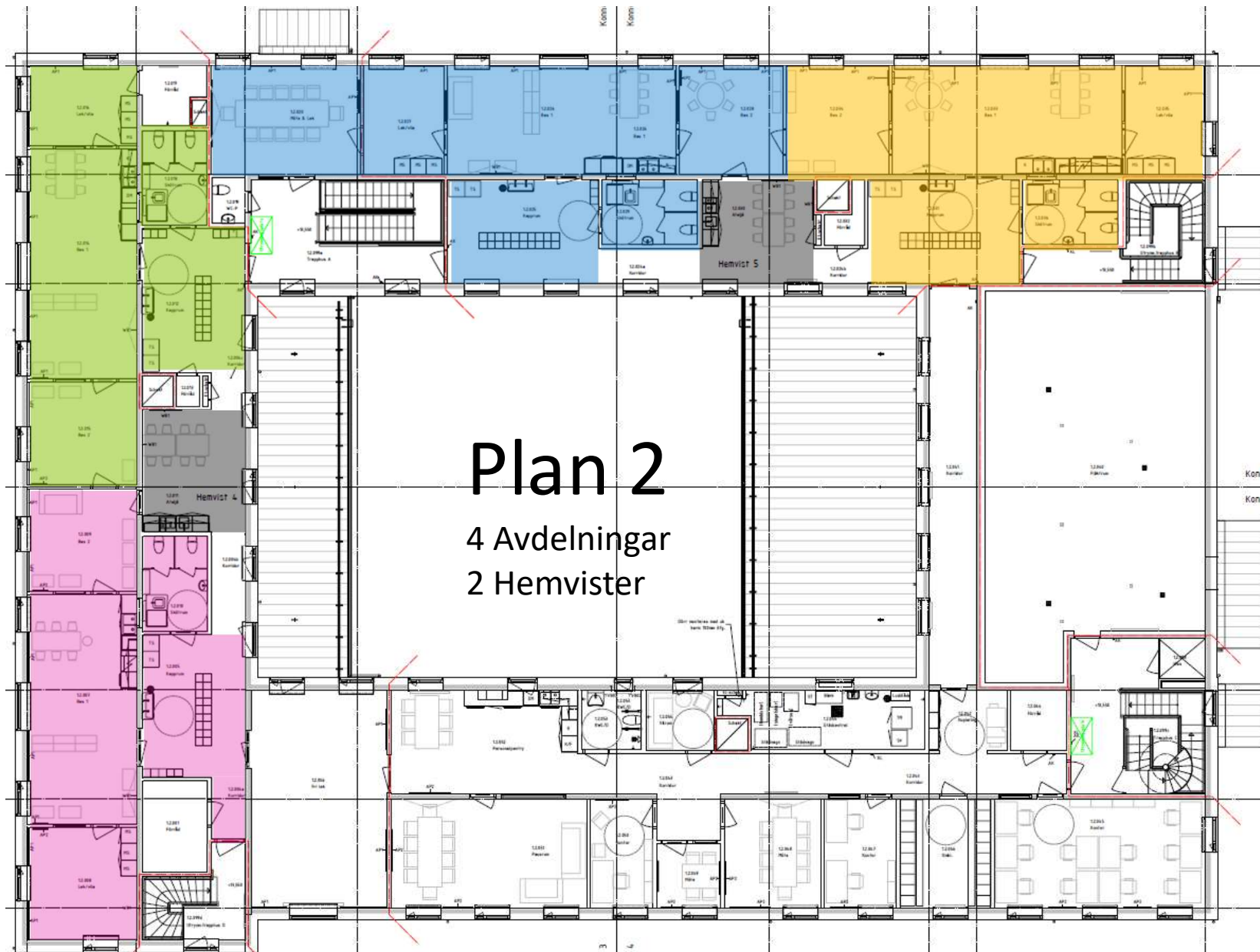




Skozon plan 2

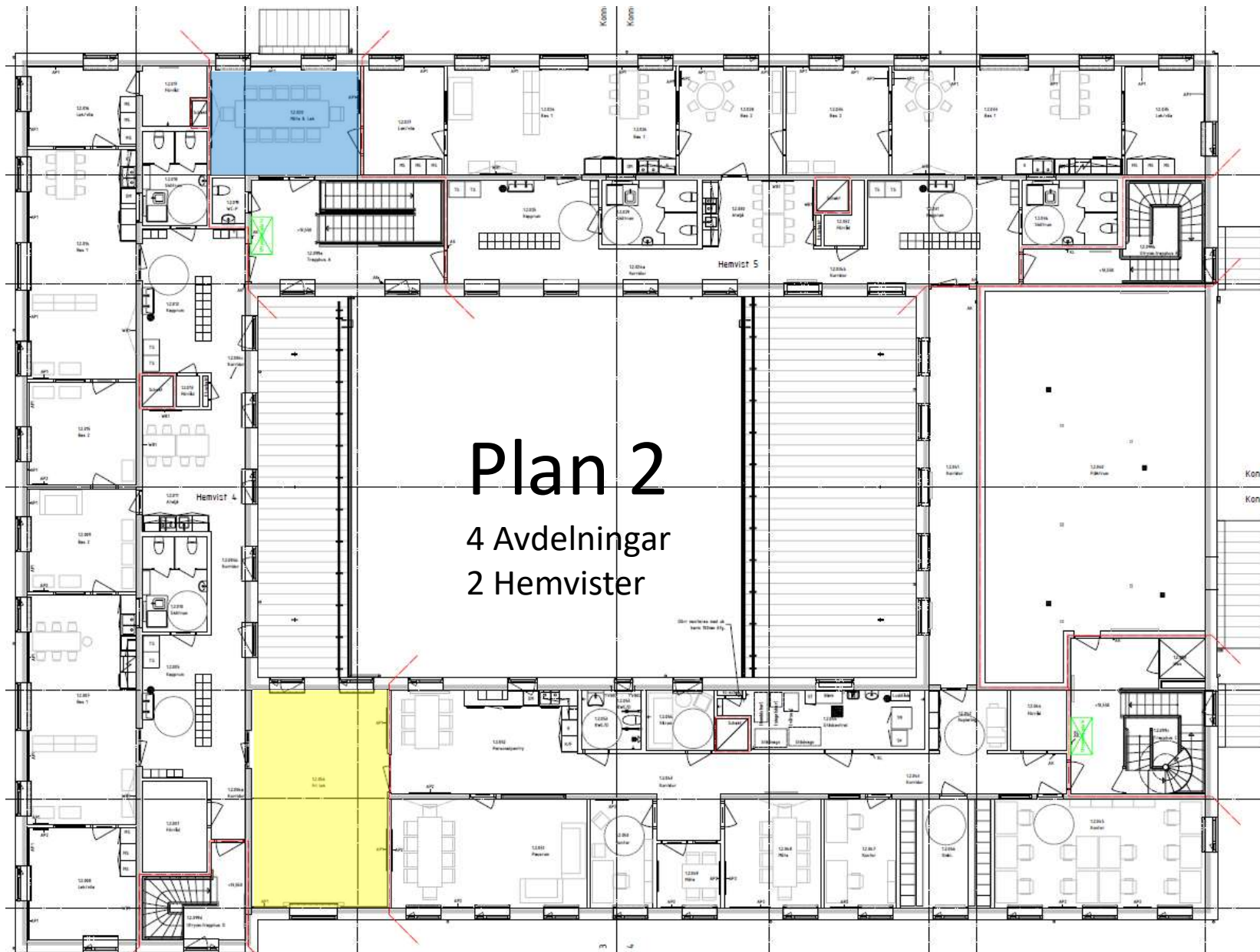


Trapphus avd. plan 2



Plan 2

4 Avdelningar
2 Hemvister



Plan 2

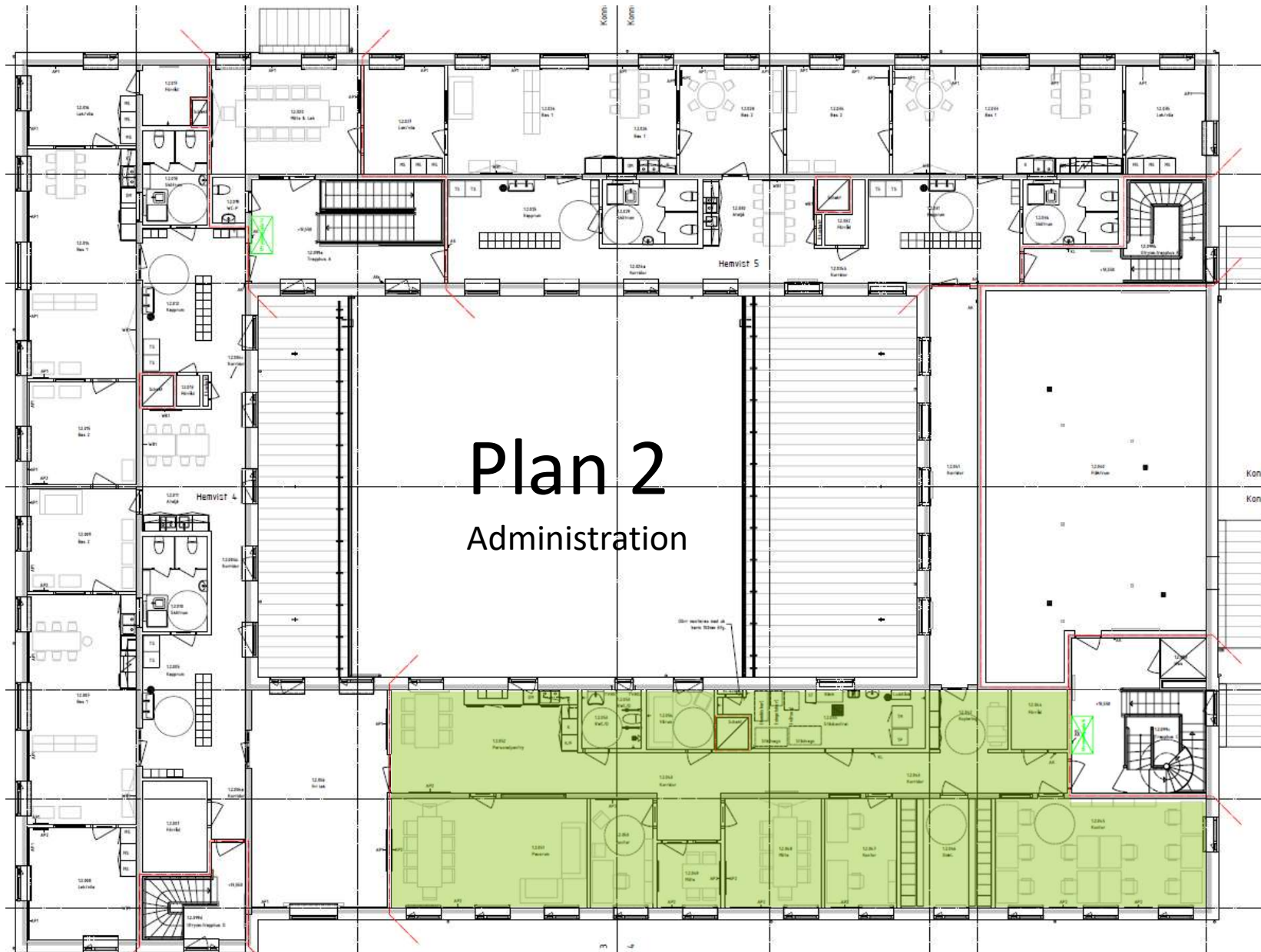
4 Avdelningar
2 Hemvister



Extra rum avd. plan 2

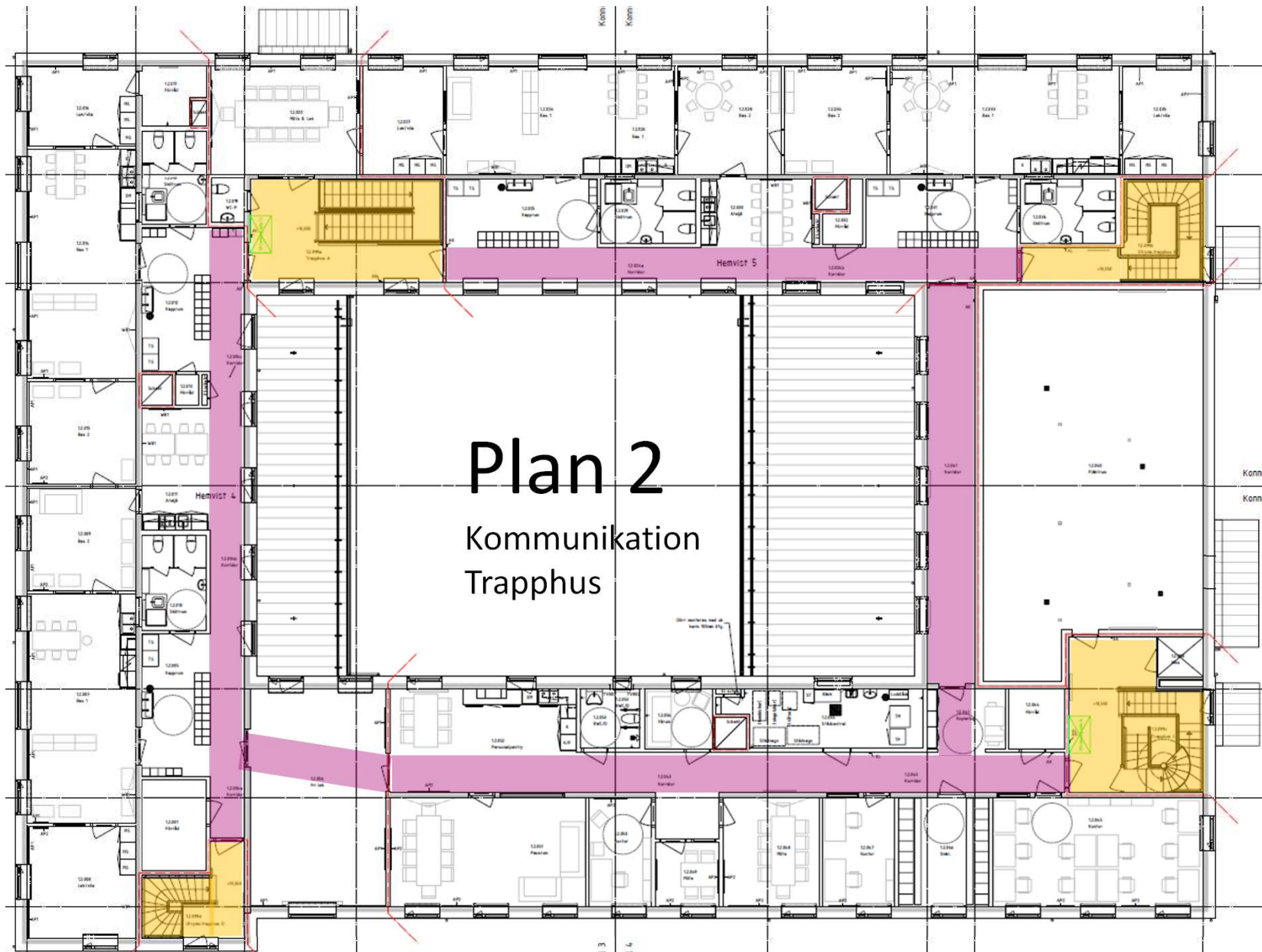


Musik o rörelserum



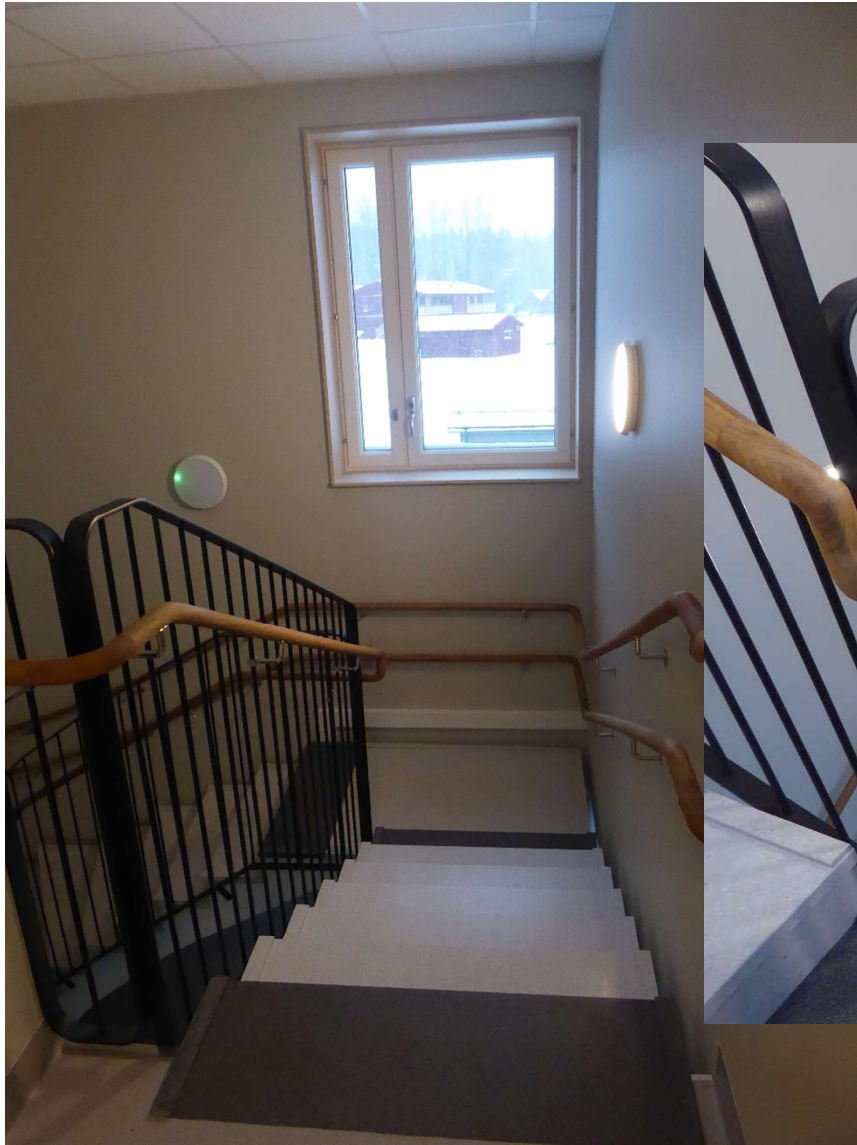
Plan 2

Administration





Trapphus avd plan 2



Trapphus restaurang